

# Port Straddle Crane

7150 and 523 Light Mapping

# Port Straddle Crane



# Product Used 523

## Features & Benefits

- 8,100 Raw Lumens; 4,000 Effective Lumens
- Available in 12V DC or 24V DC configurations
- Wide Flood, Medium Flood & Narrow Flood beam patterns available
- Durable glass outer lens
- Rugged solid state LEDs can withstand shock & vibration
- Long-lasting LEDs mean never having to replace another bulb again! Die-cast aluminum housing provides maximum protection Universal mount
- Overvoltage Protection: 150V peak for 400ms duration, 5 pulses at a 10s interval

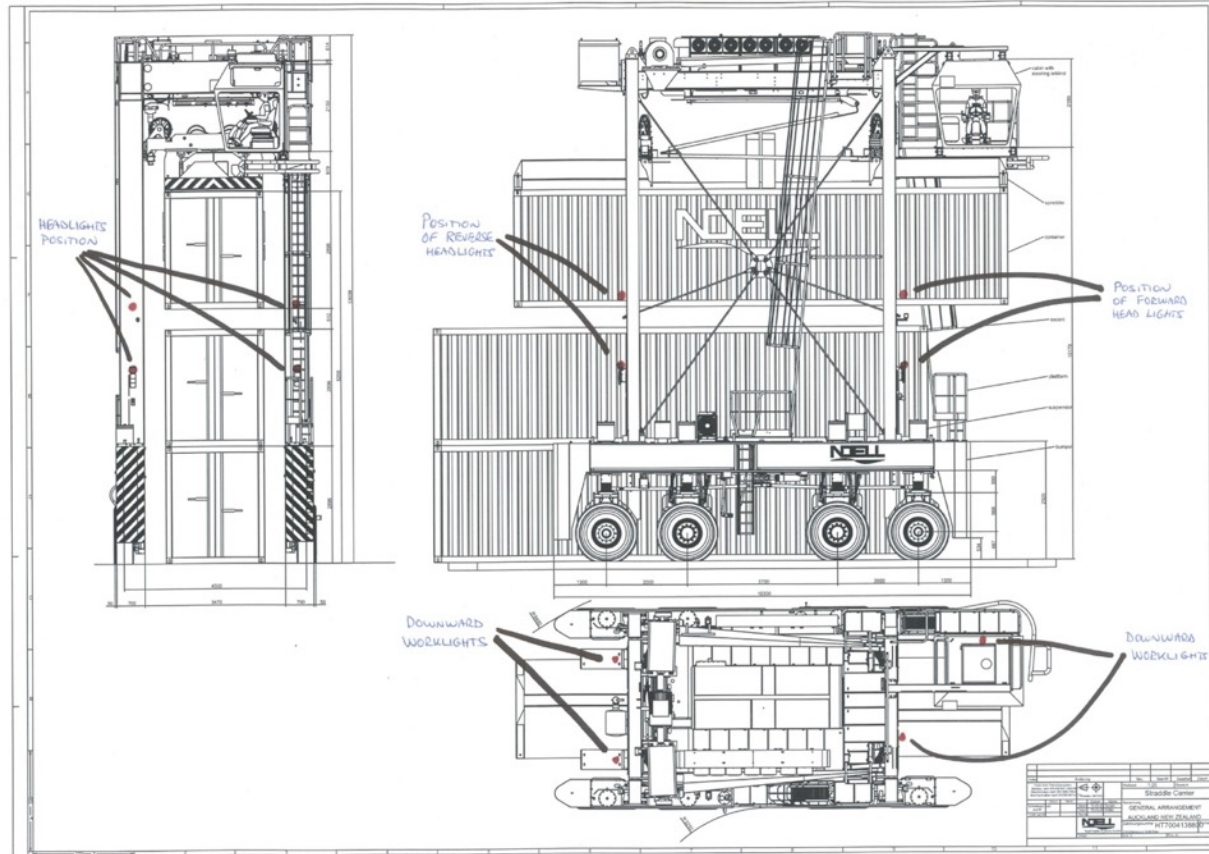


# Product Used 7150

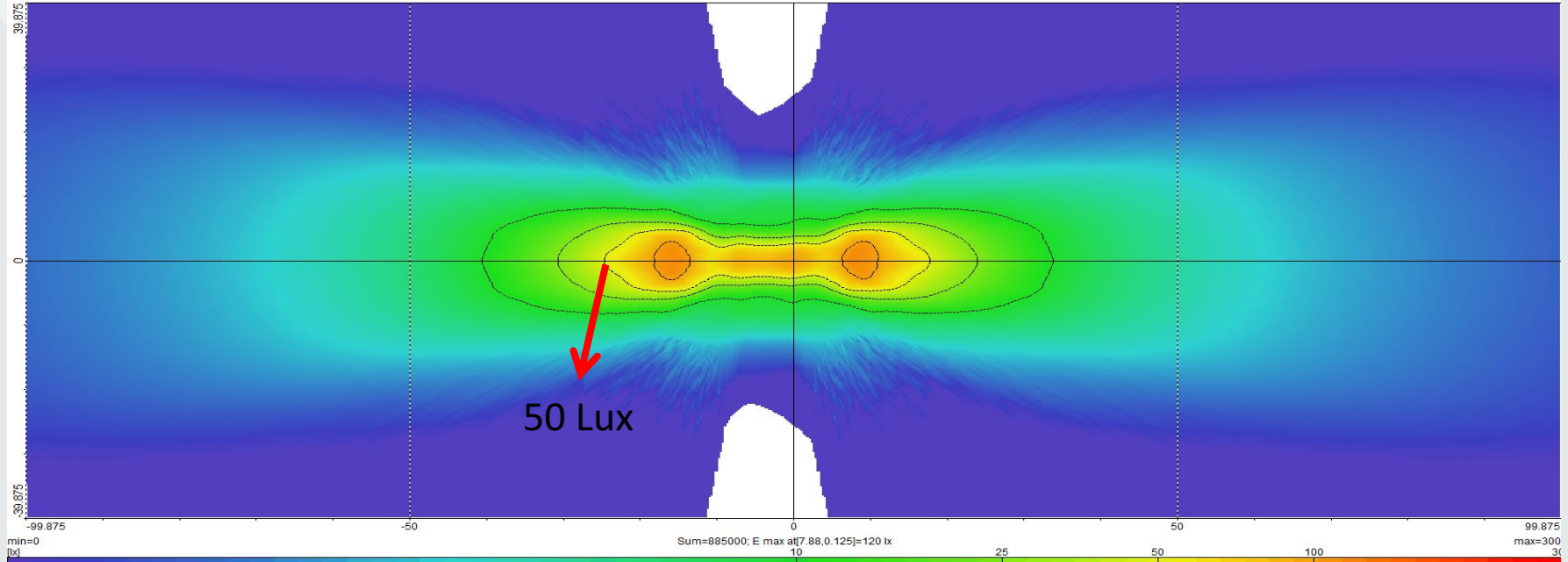
## Features & Benefits

- 4,500 Raw Lumens; 3,000 Effective Lumens
- Available in 12V DC or 24V DC configurations
- Flood, Spot & Trapezoid beam patterns available
- Your choice of durable glass or polycarbonate (amber or clear) lens
- options Rugged solid state LEDs can withstand shock & vibration
- Long-lasting LEDs mean never having to replace another bulb again! Die-cast magnesium housing provides maximum protection Universal mount
- Available in an IRED version (Model 7159)
- Overvoltage Protection: 150V peak for 400ms duration, 5 pulses at a 10s interval

**J.W. SPEAKER.**  
*Engineered. Lighting. Solutions.*

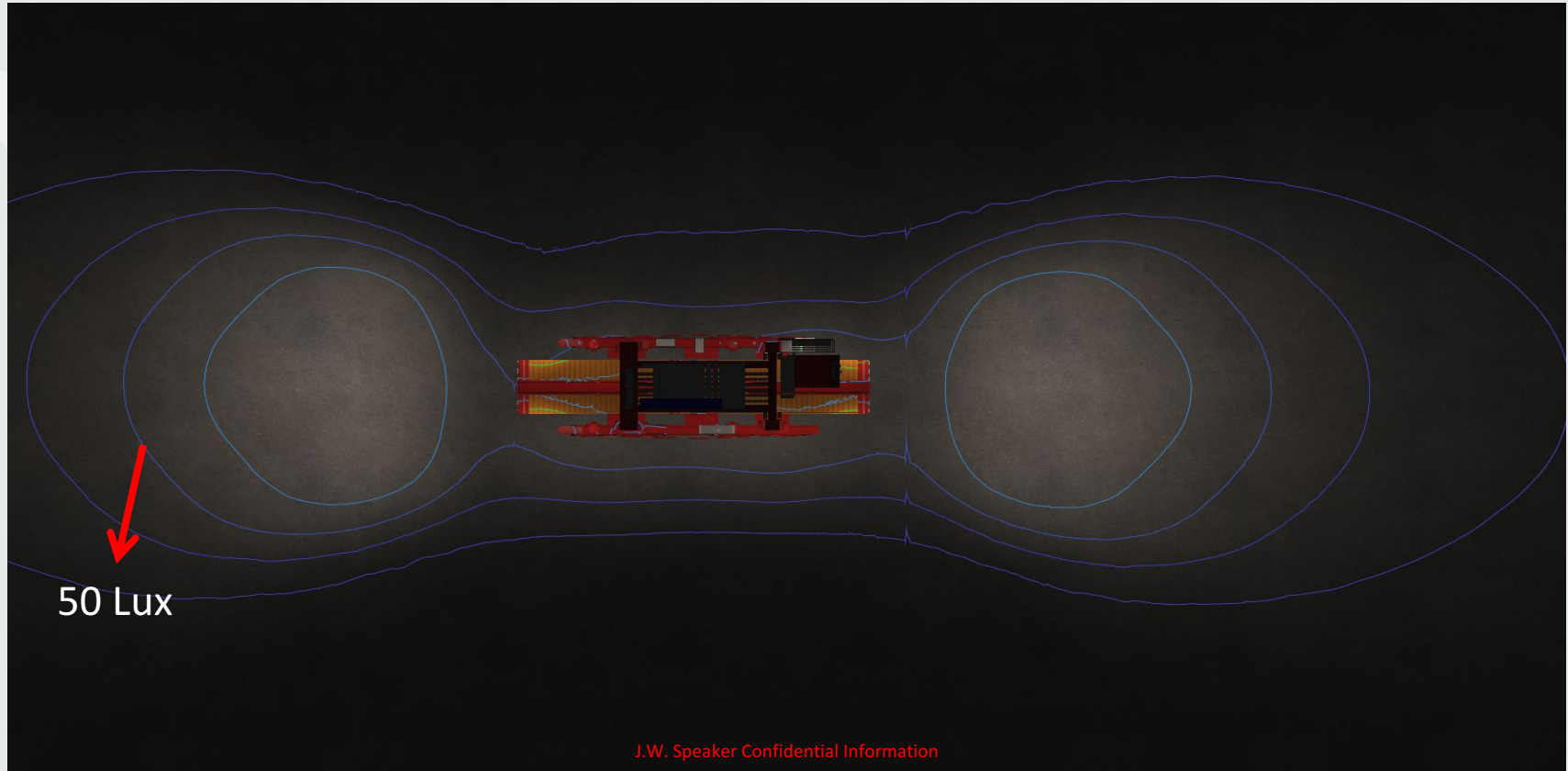


# Bird Eye View Lux with 523 and 7150

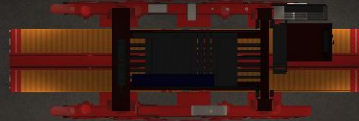


Diagrams show the lux values on the ground only, with no obstructions considered

# VR Light Map with 523 and 7150



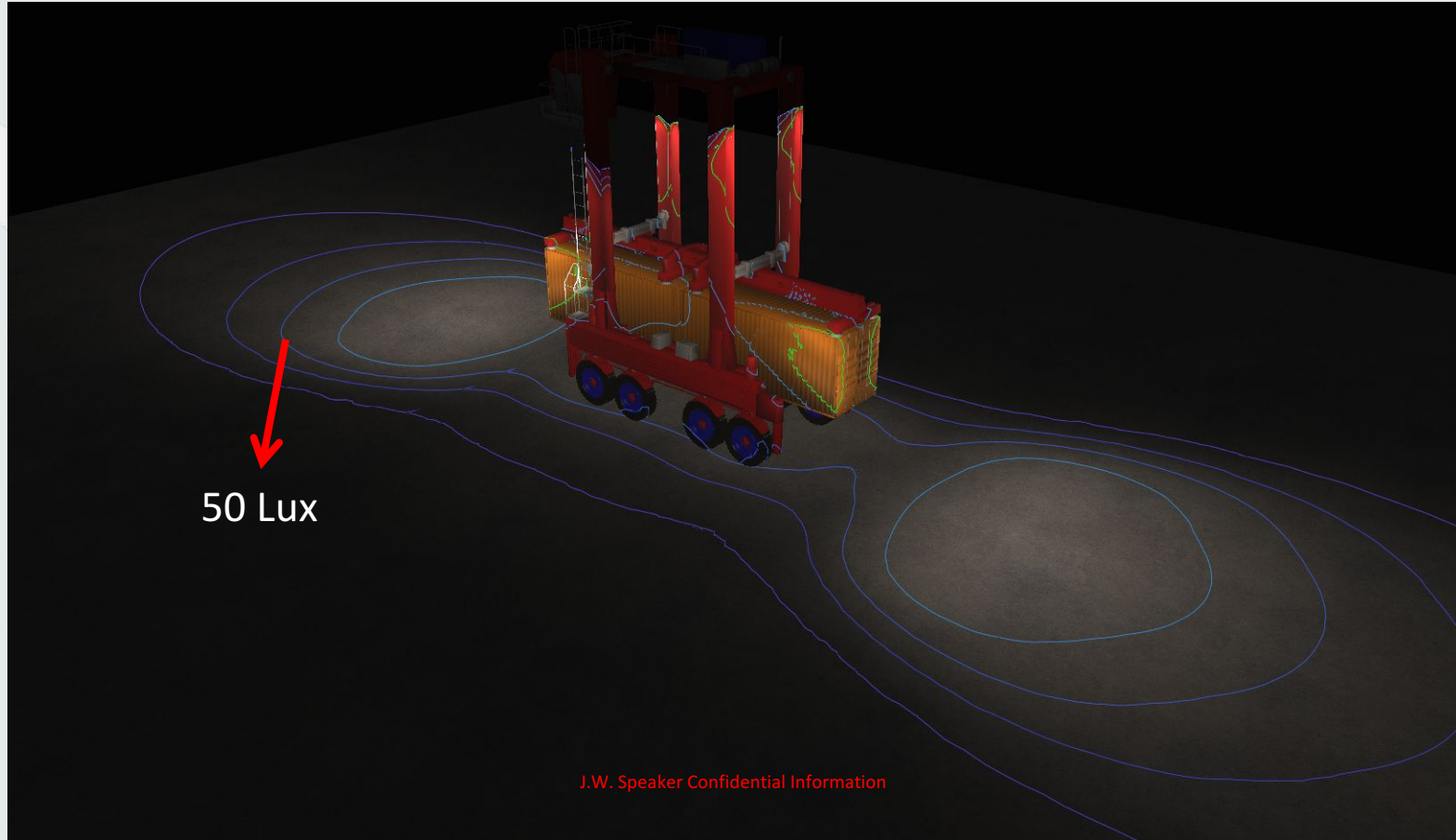
# VR Light Map with 523 and 7150



J.W. Speaker Confidential Information



# VR Light Map with 523 and 7150



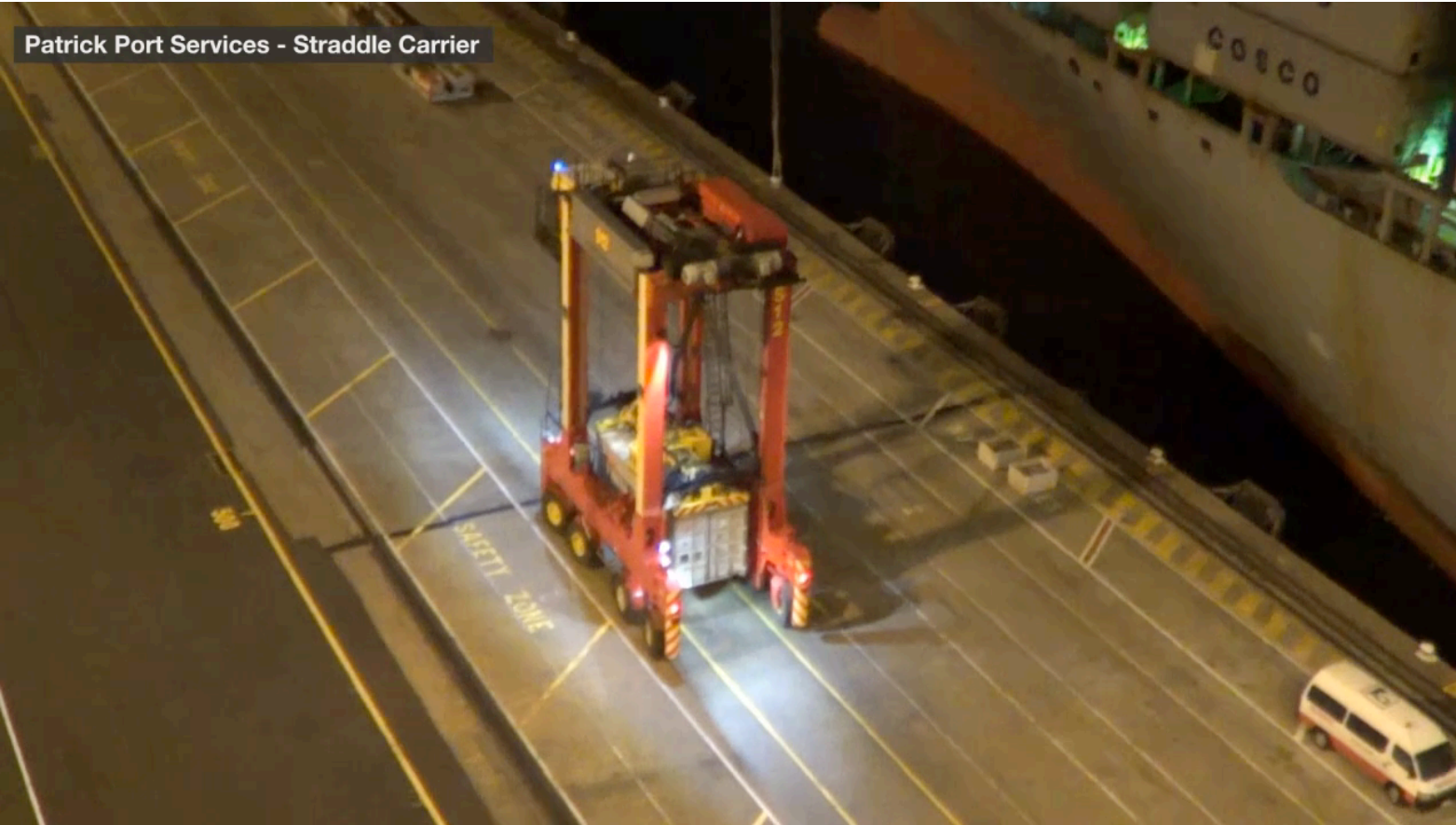
# VR Light Map with 523 and 7150



# Night Photo Straddle 523 and 7150

Model 7150  
and 523  
Melbourne

Patrick Port Services - Straddle Carrier

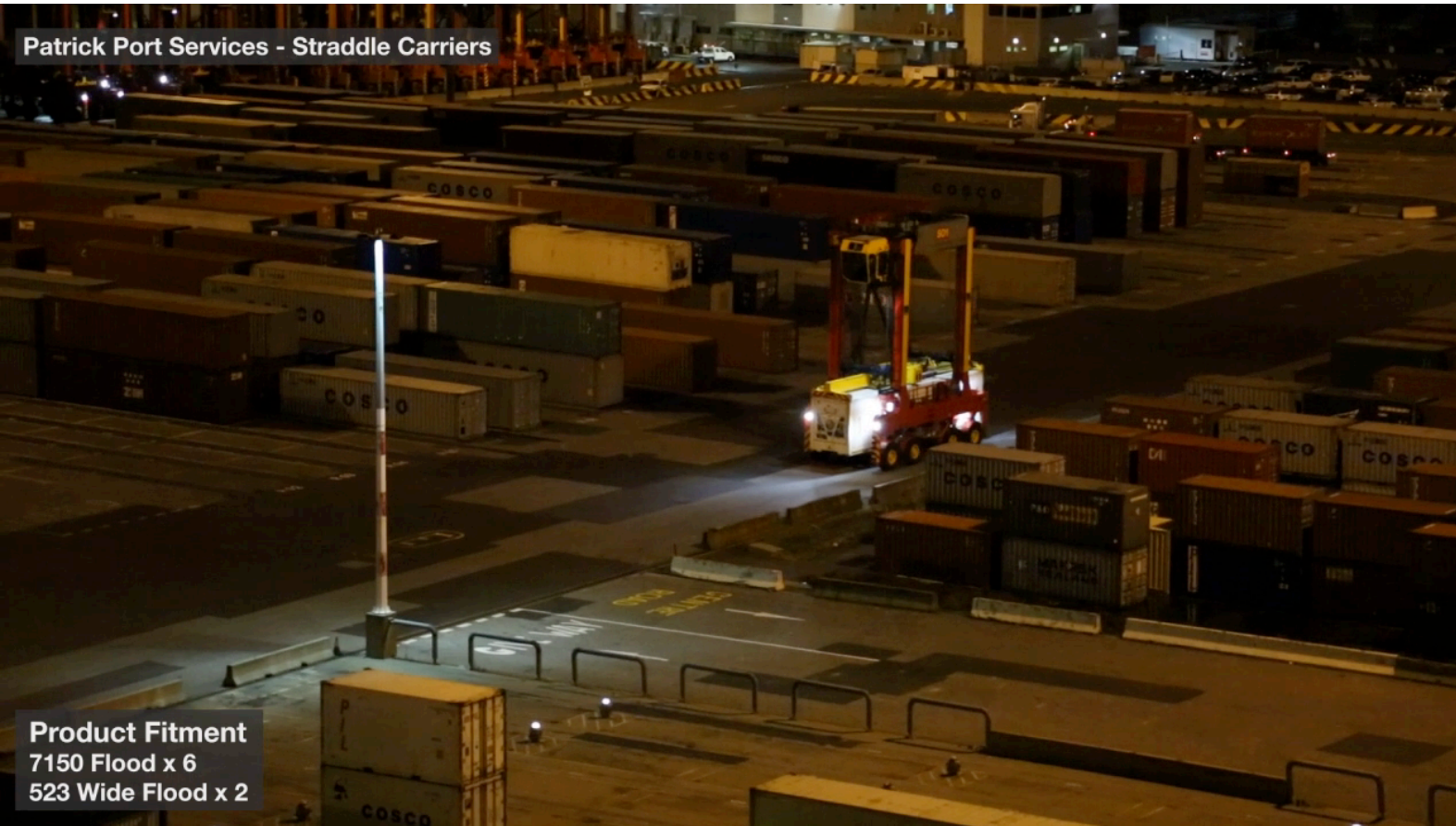


# Night Photo Straddle 523 and 7150

**J.W. SPEAKER**  
Engineered. Lighting. Solutions.

Model 7150  
and 523  
Melbourne

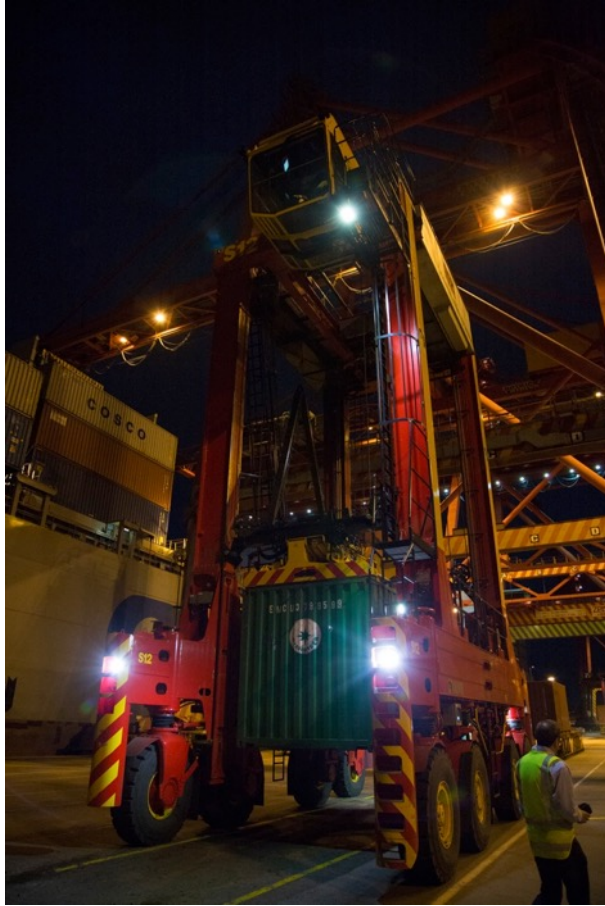
Patrick Port Services - Straddle Carriers



Product Fitment  
7150 Flood x 6  
523 Wide Flood x 2

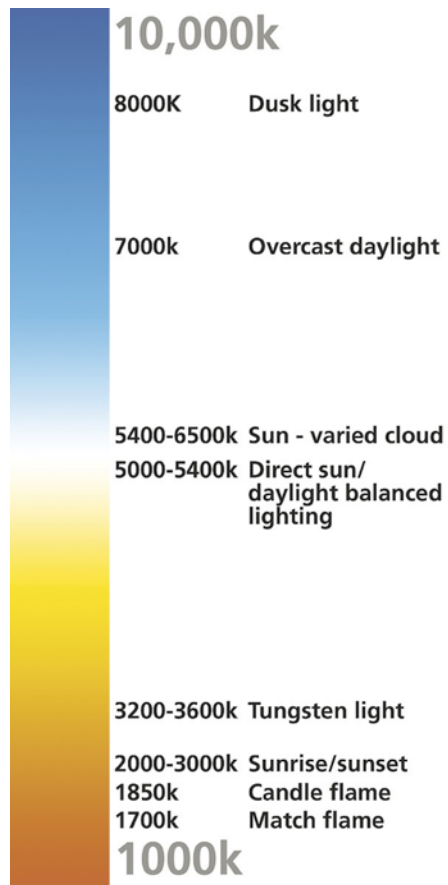


# Night Photo Straddle 523 and 7150



- Model 523 and 7150 colour temperature is 5000 kelvin
- 5000K-5500K is high noon daylight which the human eye likes it true daylight safety colour for night outside work.
- J.W. Speaker, we not only select LEDs out of the highest lumen output bin but also accept only those LEDs with a color temperature of 5000K to 5700K, thus producing a light that truly shines like the sun at midday for safety at night!

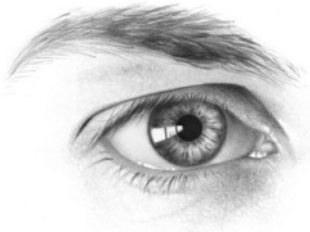
# Colour Temperature



Approx 30% of all accidents occur at night

50% of all accidents are the result of shortcomings in visual perception

The human brain absorbs 90% of all information through the eyes



**The eye is the weak link at night**

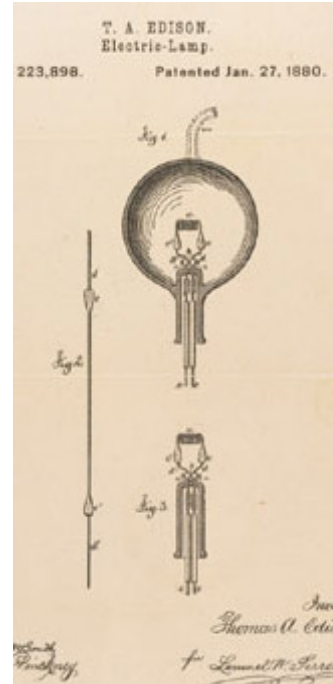


# Lighting History

The light bulb was invented in 1879 by Thomas Edison.



The bulb fundamentals have not changed over the years



# Light – LED

The LED was invented in 1962 by Nick Holonyak, Jr., created the first practical visible light-emitting diode.

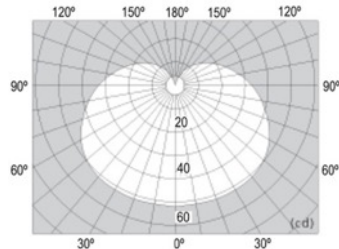
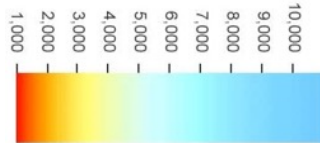
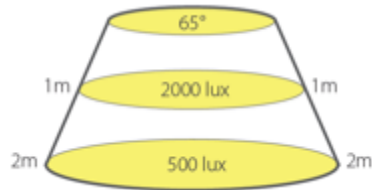


The disadvantage of bulbs is that most of the energy consumed is converted into heat rather than visible light.

Light Emitting Diode technology is changing this balance and luminous efficiencies 5 – 10 times to that of standard bulbs have been achieved.

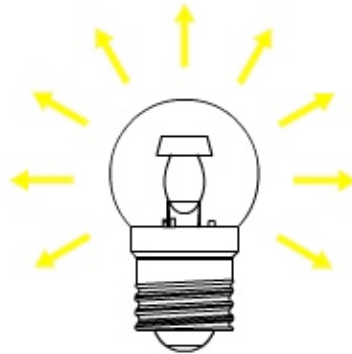
Research is now suggesting that this results in improved visibility of LED lighting, particularly in adverse conditions such as heavy rain and fog.

To design a lamp we only use 3 scientific discipline!



- Lux light require on the ground
- Kelvin light colour required
- Candela light require at angle

Lumens are not use to design a lamp



**Luminous flux**  
**Unit: lumen (lm)**

Thank you and any question