

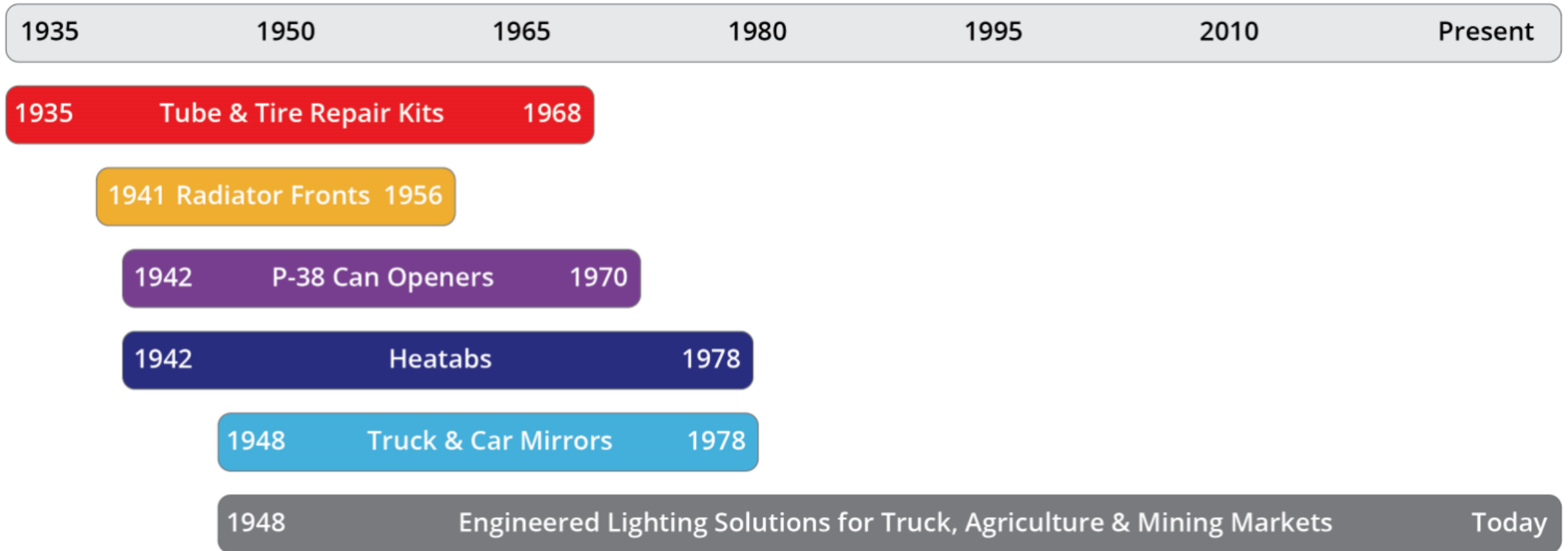


The Intersection of Science + Design

Our History

- Today, J.W. Speaker Corporation is still family owned and ran business
- Lead by Tim and Jamie Speaker with their management team
- Development of world leading LED forward lighting for key OEM worldwide
- Growing into the aftermarket with the latest LED performance technology
- Expanding into different markets around the global as a key brand
- Work closely with our OEM and aftermarket distributor to develop the world first LED headlamps, work lamps and safety products
- To meet all our customers need and wants with latest technology in LED lighting

Our History





Design Manufacturing Innovative Products for Over 80 years



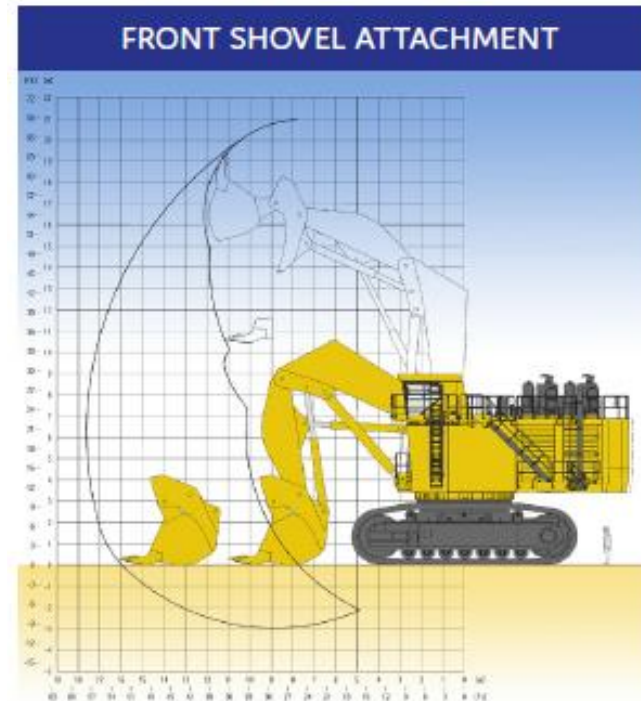
Safety Through Innovative Lighting Product

By J.W. Speaker

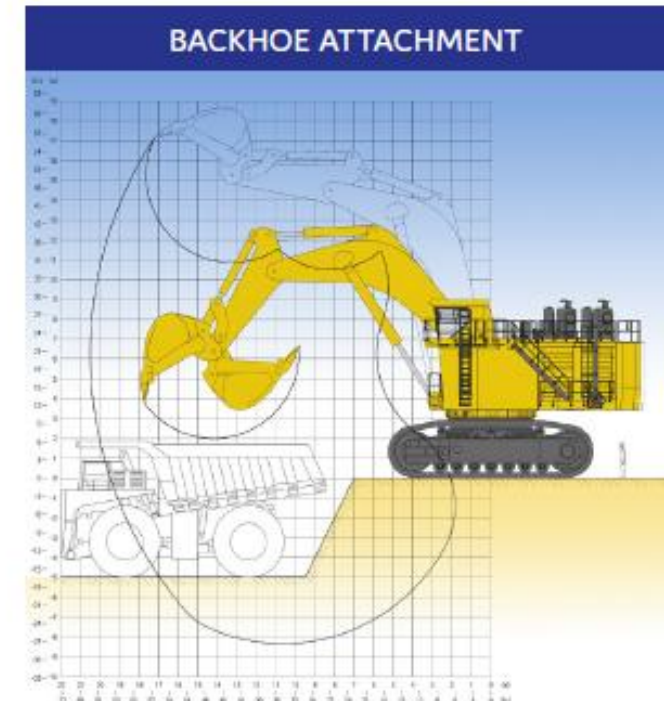
Komatsu PC7000 Shovel LED Scene Illumination

The Intersection of Science + Design

Komatsu PC7000



Boom length	Stick length
8,000 mm (26'3")	5,500 mm (18'1")
Max. cutting height	Max. dumping height
20,940 mm (68'8")	13,760 mm (45'2")
Max. digging depth	Max. digging reach
2,970 mm (9'9")	17,620 mm (57'10")
Break-out force (ISO)	Crowd force (ISO)
2,086 kN (468,870 lb)	2,147 kN (482,580 lb)



Boom length	Stick length
11,000 mm (36'1")	5,100 mm (16'9")
Max. digging height	Max. dumping height
17,130 mm (56'2")	10,860 mm (35'8")
Max. digging depth	Max. digging reach
8,340 mm (27'4")	20,530 mm (67'4")
Break-out force (ISO)	Tear-out force (ISO)
1,692 kN (391,330 lb)	1,499 kN (340,080 lb)

Front View:

① Model 623 Wide Flood

① Model 623 Medium Flood

This combination will give full illumination for front at the face for **option 1 and 2**





Left Side View:

① Model 623 Wide Flood

For illumination on Cab Side
Option 1



Left Side View:

① Model 623 Wide Flood

For illumination on Cab Side
Option 2

Right Side View:

① Model 623 Wide Flood

For illumination on Non Driver
Cab Side **Option 1**



Right Side View:

① Model 623 Wide Flood

For illumination on Non Driver
Cab Side **Option 2**





Rear View:

① Model 623 Wide Flood

For illumination on Rear **Option 1**



Rear View:

① Model 623 Wide Flood

For illumination on Rear **Option 2**



V.R. Mapping For Komatsu PC 7000

Komatsu PC 7000 VR Mapping

- Use Model 623 making the shovel or Backhoe as main Illumination
- Model 623 IP67 and IP69K 16-60VDC, weight 8.16kg
- Raw Lumen 40,000 and Effective 20,000 Lumen
- Colour Temperature 5700K (Kelvin), Daylight at High Noon 5500k
- Diesel System 24V Only require Model 623
- AC/DC Converter Box 24V 240W 110-277V AC IP69K with plug and play cable

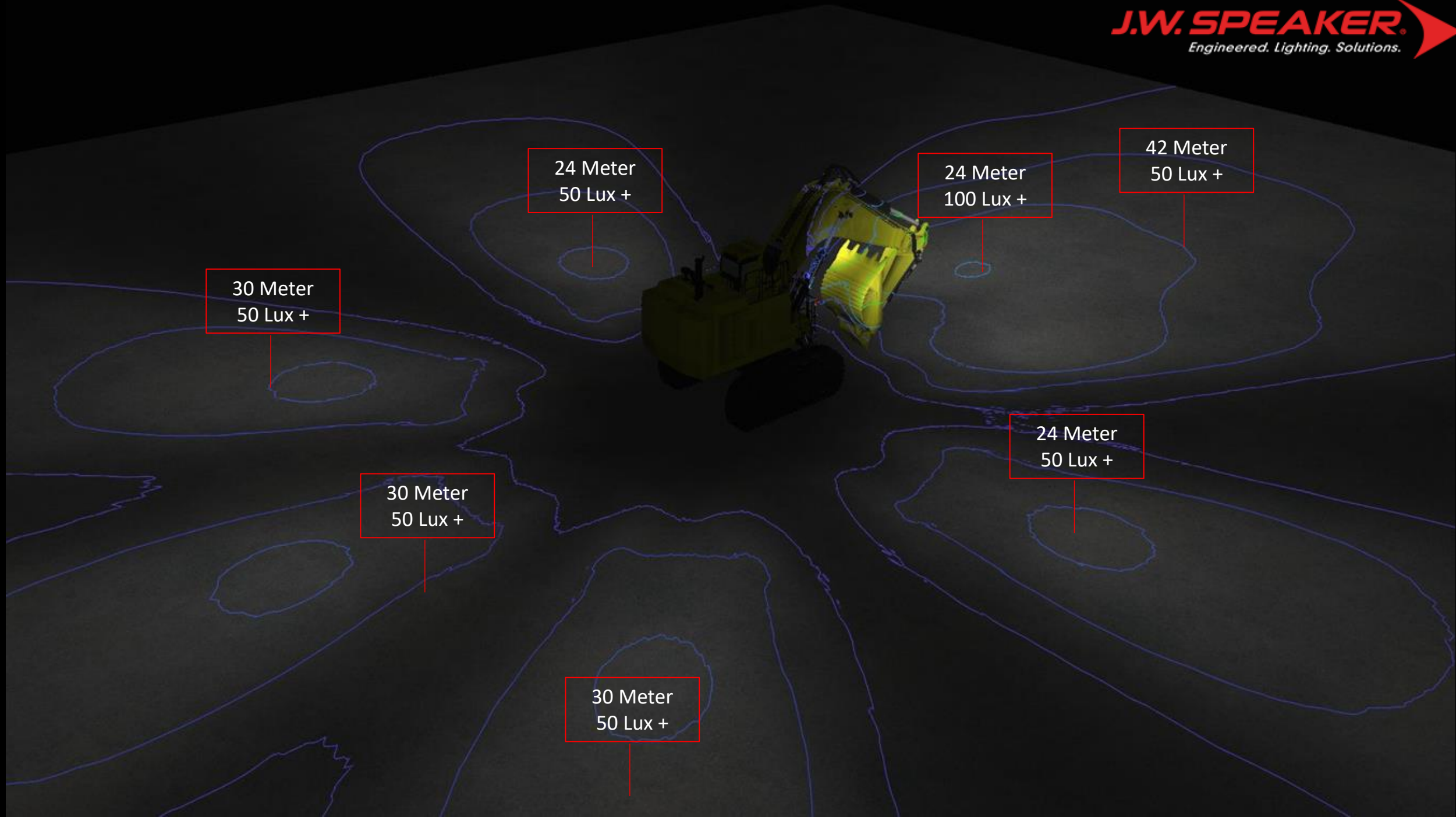
Komatsu PC 7000

Option 1

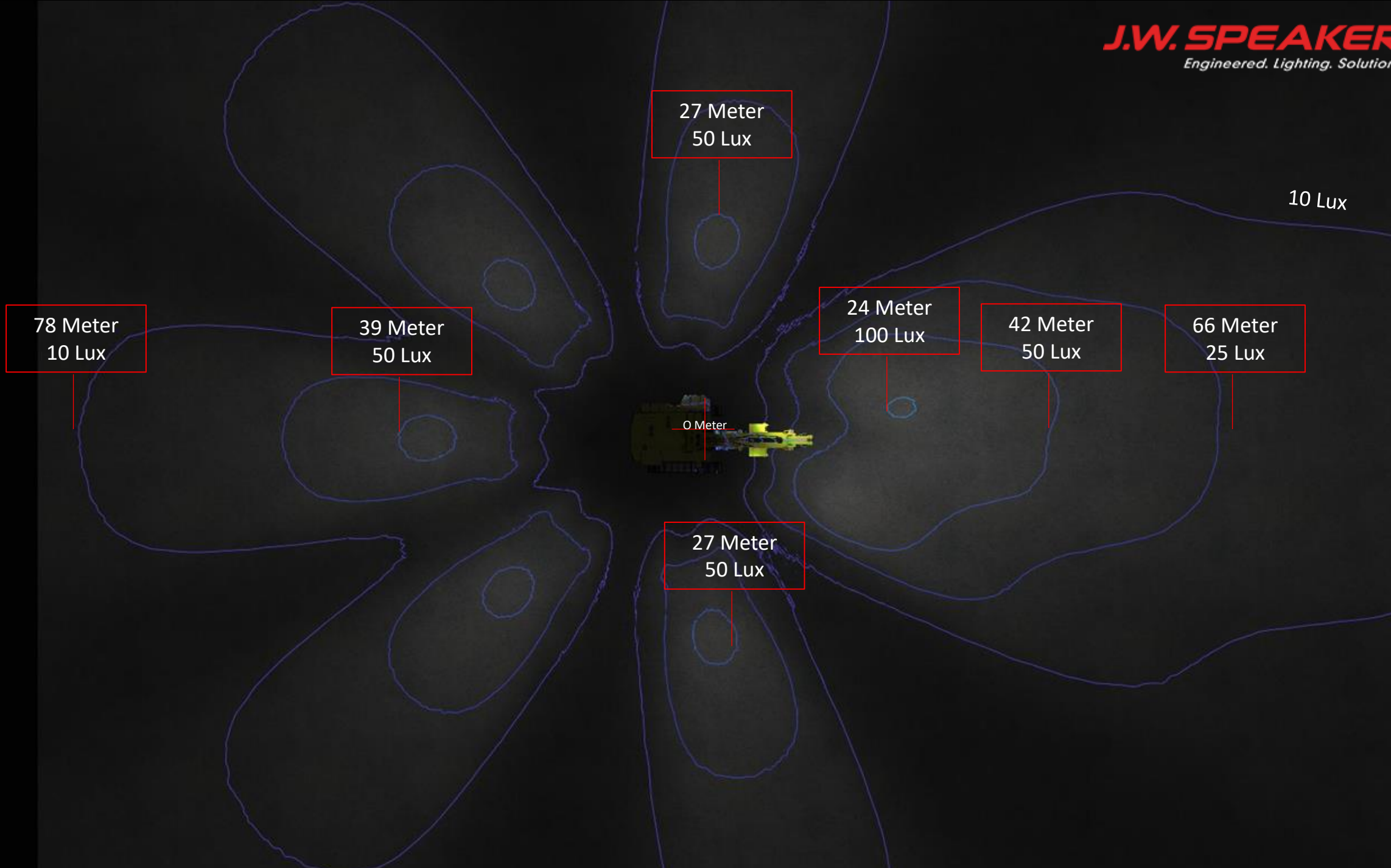
8 Model 623

360 illumination











Komatsu PC7000 24V System

PRODUCT INFORMATION

Description	16-60V LED Work
Height	216.41 mm / 8.52 in
Width	498.60 mm / 19.63 in
Depth	88.90 mm / 3.5 in
Shape	Rectangular
Outer Lens Material	Glass
Outer Lens Color	Clear
Housing Material	Die-Cast Aluminum
Housing Color	Black
Mounting Type	Universal Pedestal Mount
Minimum Operating Temperature	-40 °C / -40 °F
Maximum Operating Temperature	65 °C / 149 °F
Product Weight	18.00 lbs / 8.16 kgs
Shipping Weight	19.63 lbs / 8.9 kgs
Additional Information	Wire Harness: SJ000W 6m Harness

ELECTRICAL SPECIFICATIONS

Input Voltage	24-48V DC
Operating Voltage	16-60V DC
Transient Spike Protection	150V peak @ 1 HZ-100 Pulses
Current Draw	10A @ 24V DC 5A @ 48V DC

REGULATORY STANDARDS COMPLIANCE



Buy America Standards	Eco Friendly
IEC IP67	IEC IP69K
UL Recognized	

PHOTOMETRIC SPECIFICATIONS

Raw Lumen Output	40,000
Effective Lumen Output	20,000
Nominal LED Color Temperature	5700 K



Model 623

7 Wide Flood 1 Medium Flood for 24V System

Komatsu PC7000 AC System

PRODUCT INFORMATION

Description	100-277V LED Work Light
Height	216.33 mm / 8.52 in
Width	498.52 mm / 19.63 in
Depth	74.80 mm / 2.94 in
Shape	Rectangular
Outer Lens Material	Glass
Outer Lens Color	Clear
Housing Material	Die-Cast Aluminum
Housing Color	Black
Bezel Color	Black
Mounting Type	Universal Pedestal Mount
Minimum Operating Temperature	-40 °C / -40 °F
Maximum Operating Temperature	90 °C / 194 °F
Product Weight	18.00 lbs / 8.16 kgs
Shipping Weight	19.49 lbs / 8.84 kgs

ELECTRICAL SPECIFICATIONS

Input Voltage	100-277V AC
Operating Voltage	100-277V AC
White Wire	Power
Black Wire	Ground
Current Draw	4A @ 115V AC

REGULATORY STANDARDS COMPLIANCE



Buy America Standards
IEC IP67

Eco Friendly
IEC IP69K

PHOTOMETRIC SPECIFICATIONS

Raw Lumen Output	33,600
Effective Lumen Output	20,500
Nominal LED Color Temperature	5000 K



Model 623

7 Wide Flood 1 Medium Flood for 110-277V System

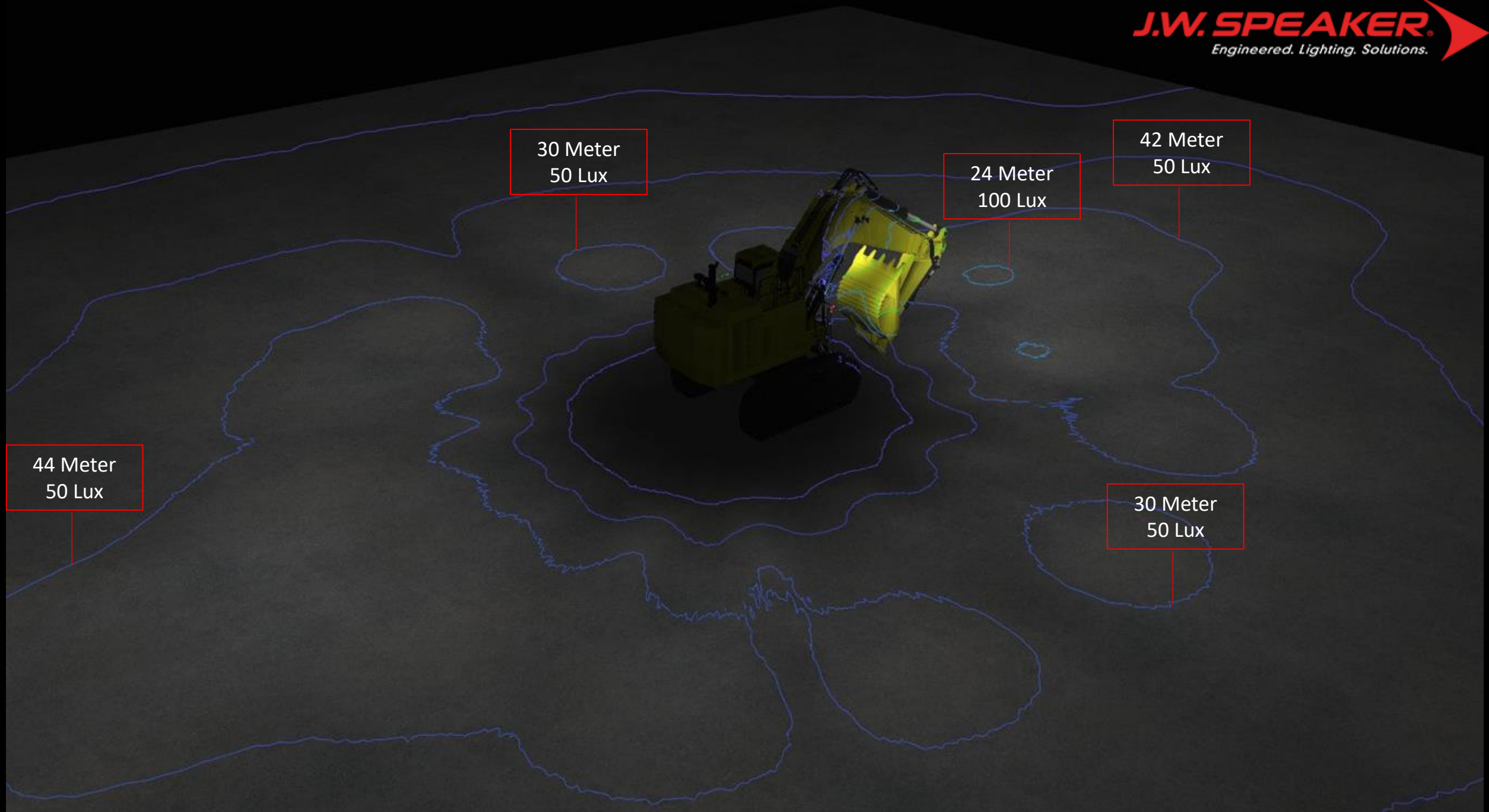
Komatsu PC 7000

Option 2

13 Model 623

Full clean illumination





30 Meter
50 Lux

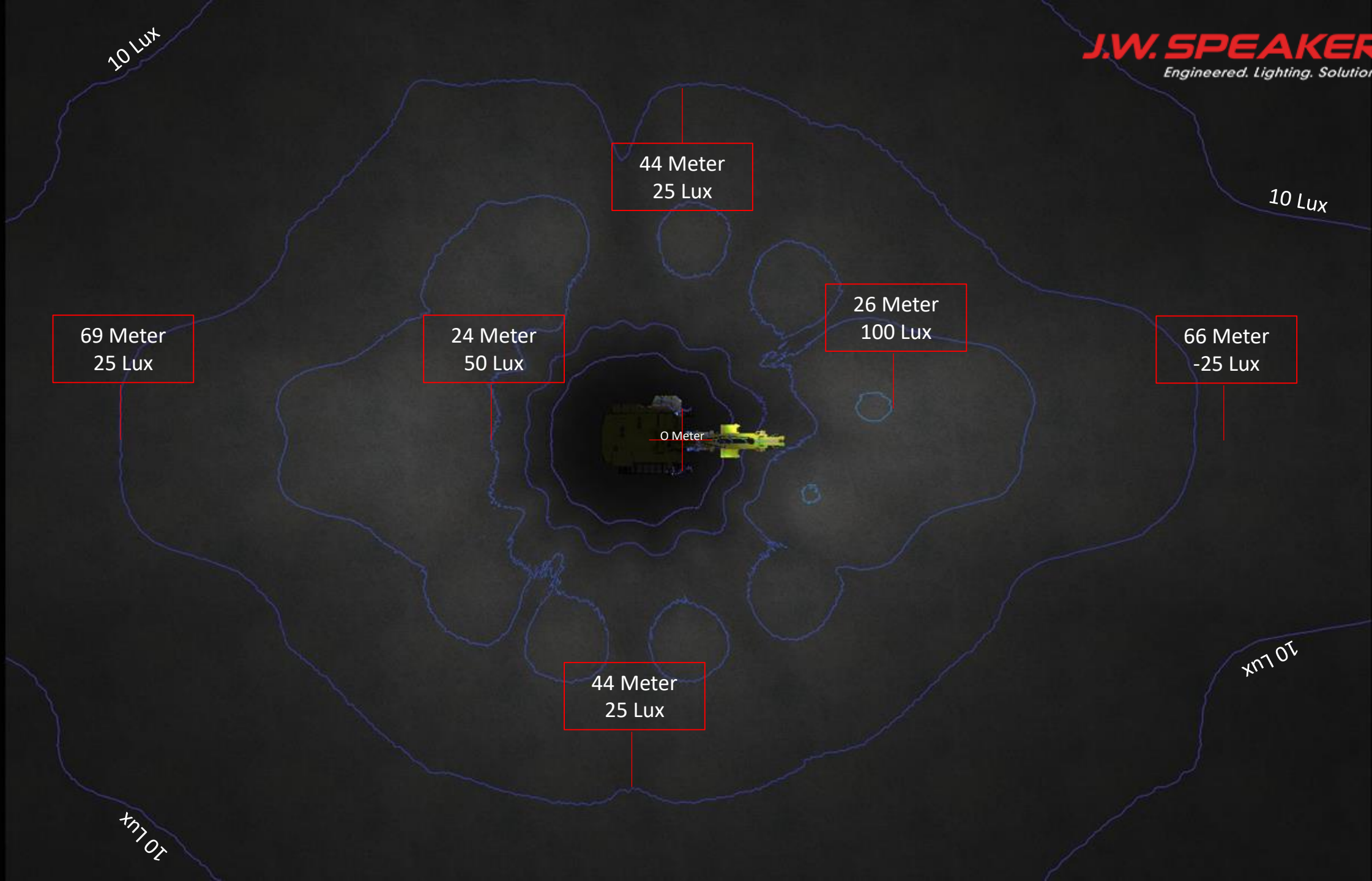
24 Meter
100 Lux

42 Meter
50 Lux

44 Meter
50 Lux

30 Meter
50 Lux







Komatsu PC7000 24V System

PRODUCT INFORMATION

Description	16-60V LED Work
Height	216.41 mm / 8.52 in
Width	498.60 mm / 19.63 in
Depth	88.90 mm / 3.5 in
Shape	Rectangular
Outer Lens Material	Glass
Outer Lens Color	Clear
Housing Material	Die-Cast Aluminum
Housing Color	Black
Mounting Type	Universal Pedestal Mount
Minimum Operating Temperature	-40 °C / -40 °F
Maximum Operating Temperature	65 °C / 149 °F
Product Weight	18.00 lbs / 8.16 kgs
Shipping Weight	19.63 lbs / 8.9 kgs
Additional Information	Wire Harness: SJ000W 6m Harness

ELECTRICAL SPECIFICATIONS

Input Voltage	24-48V DC
Operating Voltage	16-60V DC
Transient Spike Protection	150V peak @ 1 HZ-100 Pulses
Current Draw	10A @ 24V DC 5A @ 48V DC

REGULATORY STANDARDS COMPLIANCE



Buy America Standards	Eco Friendly
IEC IP67	IEC IP69K
UL Recognized	

PHOTOMETRIC SPECIFICATIONS

Raw Lumen Output	40,000
Effective Lumen Output	20,000
Nominal LED Color Temperature	5700 K



Model 623

12 Wide Flood 1 Medium Flood for 24V System



Komatsu PC7000 AC System

PRODUCT INFORMATION

Description	100-277V LED Work Light
Height	216.33 mm / 8.52 in
Width	498.52 mm / 19.63 in
Depth	74.80 mm / 2.94 in
Shape	Rectangular
Outer Lens Material	Glass
Outer Lens Color	Clear
Housing Material	Die-Cast Aluminum
Housing Color	Black
Bezel Color	Black
Mounting Type	Universal Pedestal Mount
Minimum Operating Temperature	-40 °C / -40 °F
Maximum Operating Temperature	90 °C / 194 °F
Product Weight	18.00 lbs / 8.16 kgs
Shipping Weight	19.49 lbs / 8.84 kgs

ELECTRICAL SPECIFICATIONS

Input Voltage	100-277V AC
Operating Voltage	100-277V AC
White Wire	Power
Black Wire	Ground
Current Draw	4A @ 115V AC

REGULATORY STANDARDS COMPLIANCE



Buy America Standards
IEC IP67

Eco Friendly
IEC IP69K

PHOTOMETRIC SPECIFICATIONS

Raw Lumen Output	33,600
Effective Lumen Output	20,500
Nominal LED Color Temperature	5000 K



Model 623

12 Wide Flood 1 Medium Flood for 110-277V System

Summary

- Illumination colour temperature of 5700K, Daylight at High Noon is 5500k
- CRI of 90+ reproduce the colours of various objects as "realistically" or "naturally"
- Design for industrial application
- Model 623 LED Scene Lamp 5 year warranty
- Model 6406 Converter 1 year warranty
- Design and manufacture in USA



Komatsu PC 7000 Shovel Red Zone

Safety Through Innovative Lighting Product

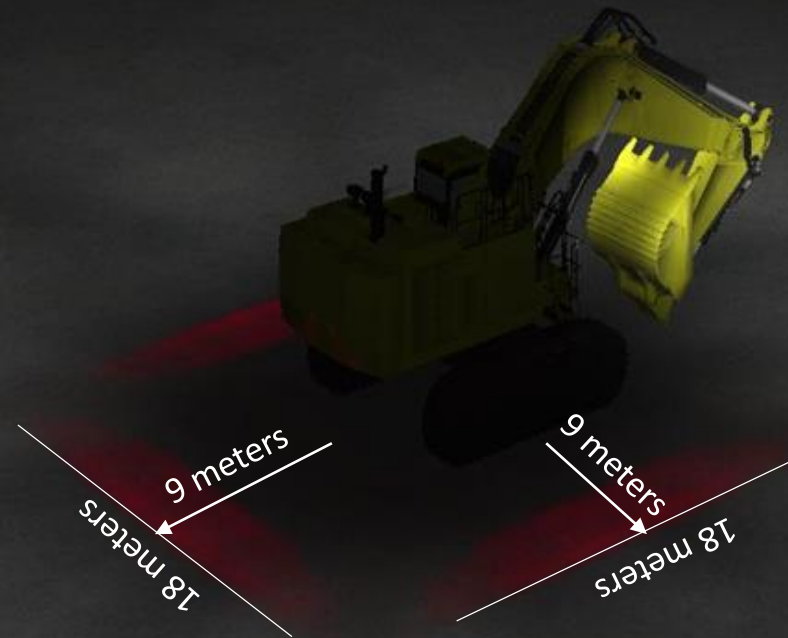
By **J.W. Speaker**

The Intersection of Science + Design

Komatsu PC7000 Red Zone

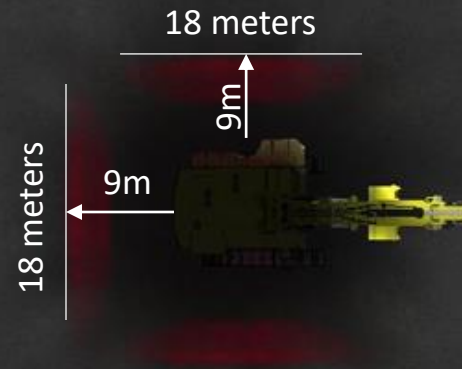
- 9 Model 527 LED Red No Go Zone Lamps
- Mounted at 6m high and 50 degrees down
- 3 Left, Right and rear hand side fitted around upper deck under the hand rails.





All 623 on with 527 Red Zone





All 623 on with 527 Red Zone

Komatsu PC 7000 24V System

PRODUCT INFORMATION

Description	12-24V LED Red Zone Light
Height	123.70 mm / 4.87 in
Width	258.57 mm / 10.18 in
Depth	102.11 mm / 4.02 in
Shape	Rectangle
Outer Lens Material	Glass
Outer Lens Color	Clear
Housing Material	Xenoy
Housing Color	Black
Mounting Hardware Description	(x2) M8-1.25 Mounting Bolt
Mounting Type	Universal Pedestal Mount
Minimum Operating Temperature	-40 °C / -40 °F
Maximum Operating Temperature	65 °C / 149 °F
Connector or Wiring	Integrated 2-Pin Deutsch Weatherproof Socket (DT04-2P)
Mating Connector	Integrated 2-Pin Deutsch Weatherproof Plug (DT06-2S)
Product Weight	2.60 lbs / 1.18 kgs
Shipping Weight	5.70 lbs / 2.59 kgs
Additional Information	The dominant wavelength is about 615nm.

ELECTRICAL SPECIFICATIONS

Input Voltage	12-24V DC
Operating Voltage	10-32V DC
Transient Spike Protection	150V peak @ 1 HZ-100 Pulses
Red Wire	Positive
Black Wire	Negative
Current Draw	1.6A @ 12V DC 0.85A @ 24V DC



Model 527
9 Red Zone

REGULATORY STANDARDS COMPLIANCE



MADE IN
USA



ECO



SEALED
IP69K

Buy America Standards
IEC IP69K

Eco Friendly

Komatsu PC 7000 AC System



PRODUCT INFORMATION

Description	24V 35W AC/DC Converter Box
Height	78.00 mm / 3.07 in
Width	200.00 mm / 7.87 in
Depth	236.00 mm / 9.29 in
Shape	Rectangular
Housing Material	Xenoy
Housing Color	Black
Maximum Operating Temperature	50 °C / 122 °F
Connector or Wiring	Input & Output Wire Harness Ordered Separately
Product Weight	1.12 lbs / 0.51 kgs
Shipping Weight	1.62 lbs / 0.73 kgs
Additional Information	Input: 100-240 V AC 50/60Hz Input Output: 24 V DC Output Current Max: 1.5 Amp UL recognized, Class 2 power supplies

ELECTRICAL SPECIFICATIONS

Input Voltage 100-240V AC

REGULATORY STANDARDS COMPLIANCE



Eco Friendly

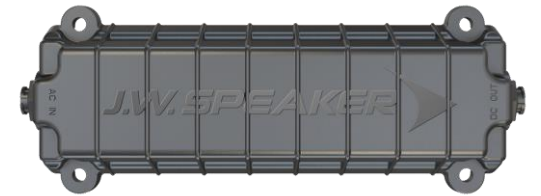


UL Recognized

IEC IP69K



AC Cable



Model 6404



AC Cable

9 AC Cable, 9 DC Cable, 9 AC/DC Converter

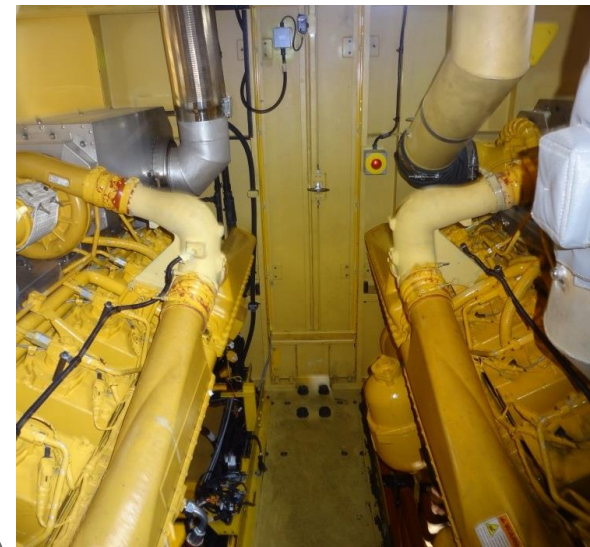
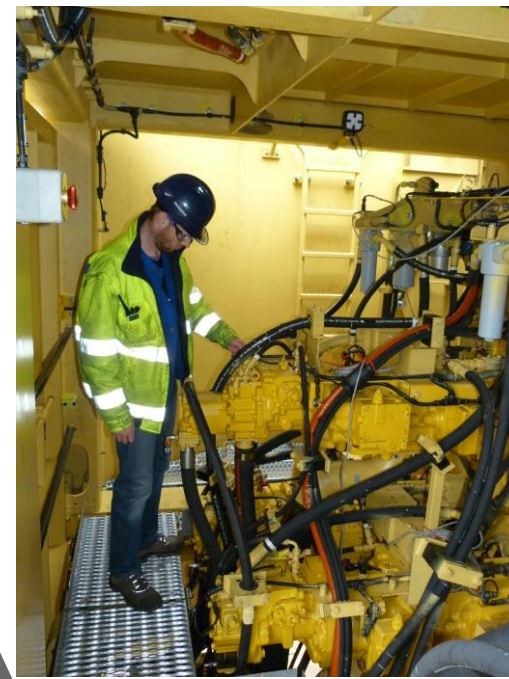
Summary

- Identify danger area around shovel with Red Warning Zone at night
- Increase night time production with easy identify where to load
- Easy fitment around walkway or other trouble-free location
- Only require 9 Lamps
- Design for industrial application
- Model 527 LED Red Zone 5 year warranty
- Model 6404 Converter 1 year warranty
- Design and manufacture in USA

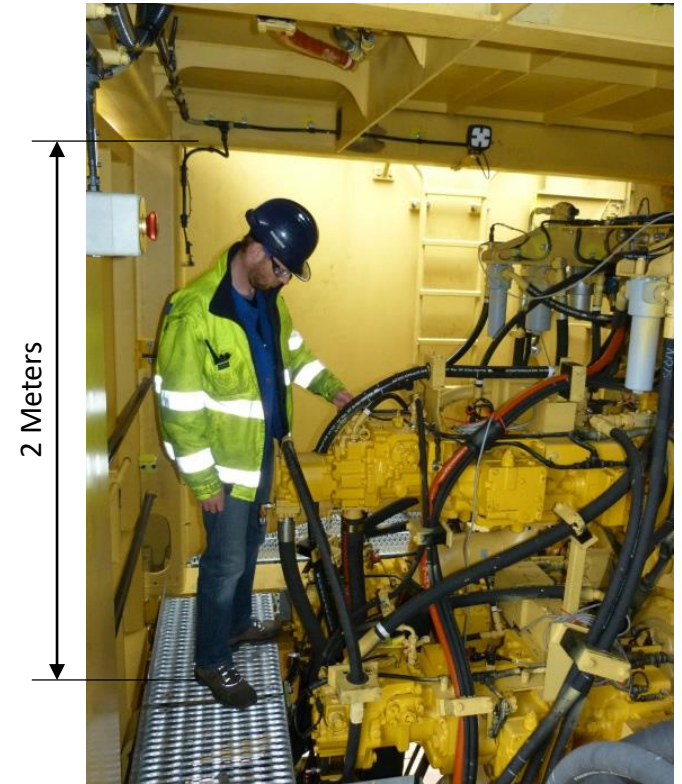
Large Shovel with LED Scene Lighting and Red Zone in Action



Komatsu Inside Lighting No Glare



Inside Lighting Komatsu PC 7000



Inside Lighting Komatsu PC 7000



Komatsu PC 7000 24V System



PRODUCT INFORMATION

Description	12-24V LED 18.5" Light Bar with Diffuse Beam Pattern
Height	40.00 mm / 1.57 in
Width	470.00 mm / 18.5 in
Depth	54.00 mm / 2.13 in
Shape	Rectangular
Outer Lens Material	Nylon
Outer Lens Color	Diffuse
Housing Material	TC PA6
Housing Color	Black
Mounting Hardware Description	(x2) M6-1 x
Connector or Wiring	Bare Leads, 2.5mm Jacketed Cable
Product Weight	1.45 lbs / 0.66 kgs
Shipping Weight	1.99 lbs / 0.9 kgs

ELECTRICAL SPECIFICATIONS

Input Voltage	12-24V DC
Operating Voltage	9-33V DC
Red Wire	High
White Wire	Ground
Brown Wire	Low
Current Draw	3.16A @ 12V DC

PHOTOMETRIC SPECIFICATIONS

Effective Lumen Output	3,600
Candela Output	1,510
Nominal LED Color Temperature	5000 K
Beam Pattern(s)	Forward Lighting - Flood (Wide)

REGULATORY STANDARDS COMPLIANCE



Buy America Standards

Eco Friendly



TS1500
Indoor and Walkways / Service



Bracket to use for mounting

Komatsu PC 7000 24V System



PRODUCT INFORMATION

Description	12-24V LED Dome Light
Height	215.90 mm / 8.5 in
Width	49.53 mm / 1.95 in
Depth	27.94 mm / 1.1 in
Shape	Rectangular
Outer Lens Material	Acrylic
Outer Lens Color	Clear
Housing Material	ABS
Housing Color	Black
Mounting Type	Low Profile Mount
Minimum Operating Temperature	-40 °C / -40 °F
Maximum Operating Temperature	65 °C / 149 °F
Connector or Wiring	Optional 2-Pin Deutsch Socket (DT04-2P); 3-Pin Deutsch Socket (DT04-3P)
Mating Connector	Optional 2-Pin Deutsch Plug (DT06-2S); 3-Pin Deutsch Plug (DT06-3S)
Product Weight	0.30 lbs / 0.14 kgs
Shipping Weight	5.40 lbs / 2.45 kgs



Model 282 Cab Lights

PRODUCT INFORMATION

Description	24V Red/White LED Dome Light with Inner Optics
Height	193.04 mm / 7.6 in
Width	122.94 mm / 4.84 in
Depth	28.96 mm / 1.14 in
Shape	Rectangular
Outer Lens Material	Acrylic
Outer Lens Color	Clear
Housing Material	Polycarbonate
Housing Color	Black
Mounting Type	Low Profile Mount
Minimum Operating Temperature	-40 °C / -40 °F
Maximum Operating Temperature	65 °C / 149 °F
Connector or Wiring	3-Pin Deutsch Socket (DT04-3P)
Mating Connector	3-Pin Deutsch Plug (DT06-3S)
Product Weight	0.62 lbs / 0.28 kgs
Shipping Weight	0.75 lbs / 0.34 kgs



Model 417 Cab Lights with Red and White
LED Red is perfect for Night inside cab

Summary

- Interior Lamps are design for the comfort for the operator and colour is close to daylight (5,500K Hi Noon Clear Blue day)
- Using Red LED for Interior is safety for the operator at night as they will not discomfort and able to see clear than a white light on
- Using the TS1500 for Inside, walkway / service area we have design the lens to have even spread with little glare to the human eye, this lamps is use in Marine for deck light
- All with a 5 year warranty

Commitment

- J.W. Speaker are fully commit to the Safety in all mining equipment from the correct illumination and Red Zone area
- To work direct with the OEM and Mine site to design and develop product to suit the industrial market
- All product are available worldwide through key distributions who comprehend the Industrial Market to meet all demand

Thank you

N120 W19434 Freistadt Road
Germantown, WI 53022 USA
www.jwspeaker.com